

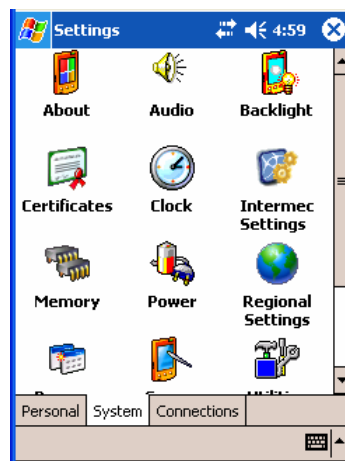
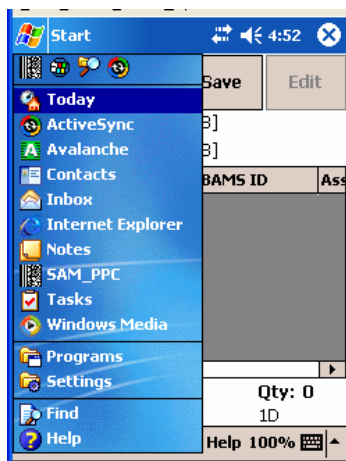
SAM PPC version 5.3.0	Date	Ref	Page
	2005-05-23	ks011p03b06v01_intermec	1(6)
		Issued by Anders Bergqvist / Lars-Ove Larsson	
Title		Intermec PPC settings	

About this guide

This instruction is a guide for how to check the settings required for Intermec 700 series Pocket PC with ScanPlus 1800 scanner used for Snitcher Asset Manager, SAM.

1 POCKETPC SETTINGS

Click on the Windows flag in the upper left corner.



Select “Settings”

The following screens can be found from here.

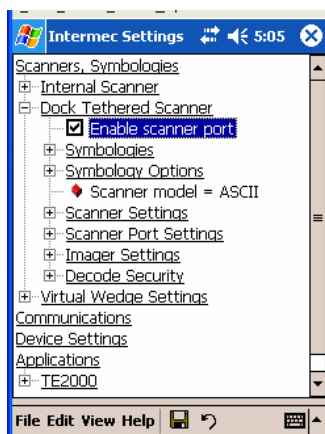
Only the first setting (System, Intermec Settings) is mandatory.

1.1 Menu “System, Intermec Settings”.

Enable the scanner.

Check the box “Enable scanner port”.

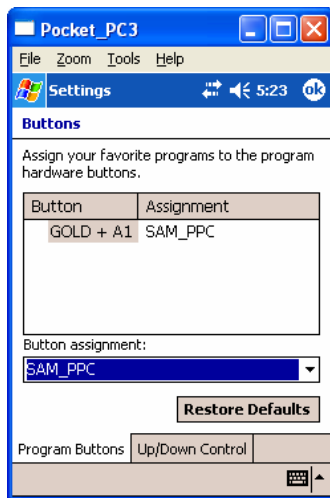
Click on the save icon in the middle of the bottom line to save the value.



SAM PPC version 5.3.0	Date	Ref	Page
	2005-05-23	ks011p03b06v01_intermec	2(6)
		Issued by Anders Bergqvist / Lars-Ove Larsson	
		Title Intermec PPC settings	

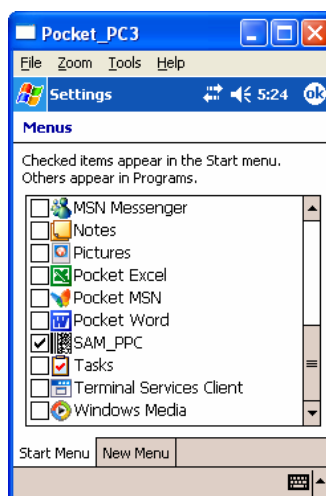
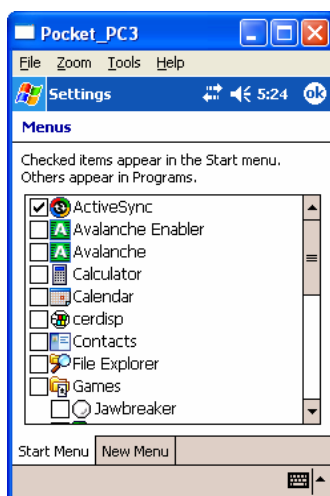
1.2 Menu “Personal, Buttons”.

Define the A1 button to start SAM



1.3 Menu “Personal, Menus”.

Remove unused programs from the menu.



SAM PPC version 5.3.0	Date	Ref	Page
	2005-05-23	ks011p03b06v01_intermec	3(6)
		Issued by Anders Bergqvist / Lars-Ove Larsson	
		Title Intermec PPC settings	

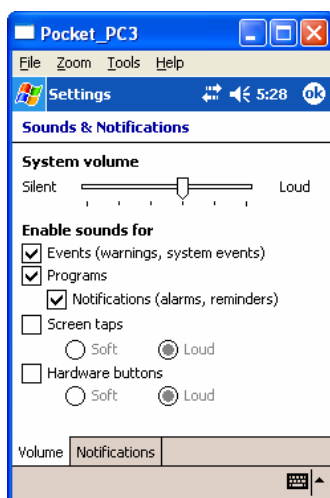
1.4 Menu “Personal, Owner Information”.

Just local information, not used in application.



1.5 Menu “Personla, Sounds & Notifications”.

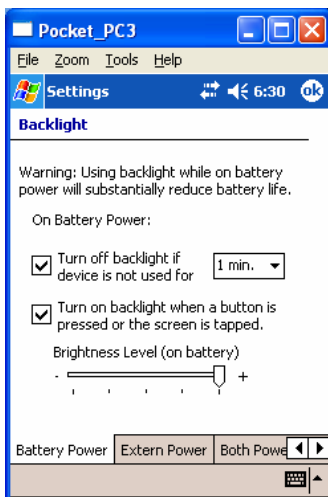
Defind the sounds settings



SAM PPC version 5.3.0	Date	2005-05-23	Ref	ks011p03b06v01_intermec	Page	4(6)
	Issued by Anders Bergqvist / Lars-Ove Larsson					
Title		Intermec PPC settings				

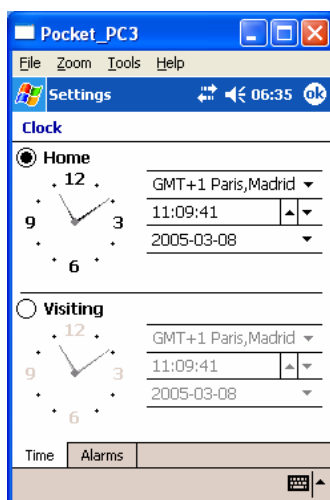
1.6 Menu “System, Backlight”.

Define the backlight.



1.7 Menu “System, Clock”.

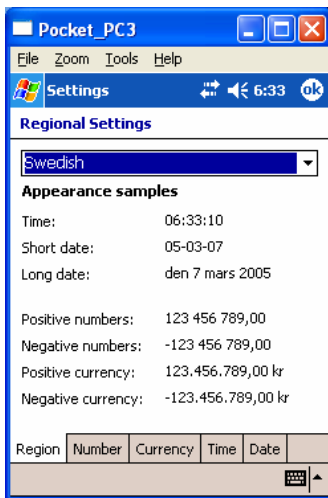
Adjust the clock.



SAM PPC version 5.3.0	Date	Ref	Page
	2005-05-23	ks011p03b06v01_intermec	5(6)
		Issued by Anders Bergqvist / Lars-Ove Larsson	
		Title Intermec PPC settings	

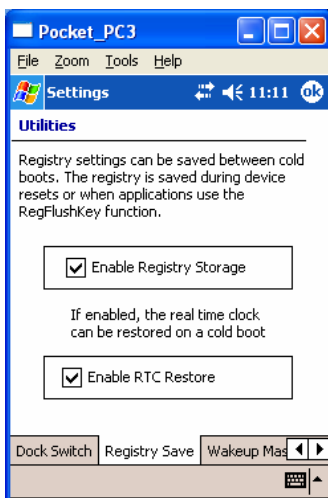
1.8 Menu “System, Regional Settings”.

Define your region to get your local settings for dates and so on.



1.9 Menu “System, Utilities”.

Save the values even after cold reboot.



SAM PPC version 5.3.0	Date	Ref	Page
	2005-05-23	ks011p03b06v01_intermec	6(6)
Issued by Anders Bergqvist / Lars-Ove Larsson			
	Title Intermec PPC settings		

2 SCANNER SETTINGS

The handheld scanner contains certain internal settings required by SAM. If these settings have been changed, scanning the following codes in this order will restore the settings required for SAM (normally only required once).

1. Default setup



2. Standard RS-232 C, 9600 baud, 7 data bits, even parity, 2 stop bits + CRLF



3. Code 128/ EAN 128

