

---

User's Manual

# Intermec PPC



**Snitcher** Asset Management®

**Prevas**

**Copyright Prevas AB 2005**

This description is produced by Prevas AB  
KS011p03b08/en V1

**Prevas AB**  
Box 1909  
S-651 19 Karlstad  
Sweden

Phone: +46 54 147400  
Fax: +46 54 147499



# Contents

<b>System Overview</b>	<b>7</b>
SAM PC and PPC .....	7
<b>Operating System Functions</b>	<b>9</b>
Leaving SAM .....	9
Volume Control .....	10
Buttons .....	10
Sounds & Notifications .....	11
Backlight .....	11
Clock .....	12
Regional settings .....	12
Keyboard .....	13
Enable Keyboard .....	13
<b>Synchronizing</b>	<b>15</b>
Partnerships .....	15
Setting up a Partnership.....	15
<b>Glossary of Terms</b>	<b>19</b>



# System Overview

---

## SAM PC and PPC

The SAM system consists of a PocketPC with SAM software that collects data that shall be transferred to Tracy.

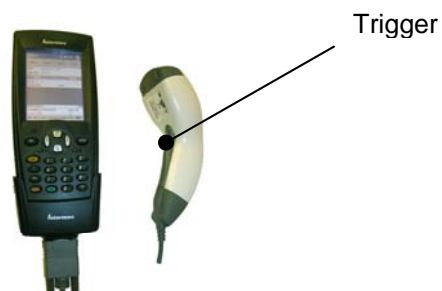
ActiveSync from Microsoft is used to transfer the data (files) to the PC when the PocketPC is docked into the cradle.

The program in the desktop PC loads these files containing unit-data from the site and what actions are to be performed on the units.



The software in the PocketPC is described in this User Guide and ActiveSync in the Help section in the application itself.

Pressing the trigger on the scanner activates the scanner.





# Operating System Functions

---

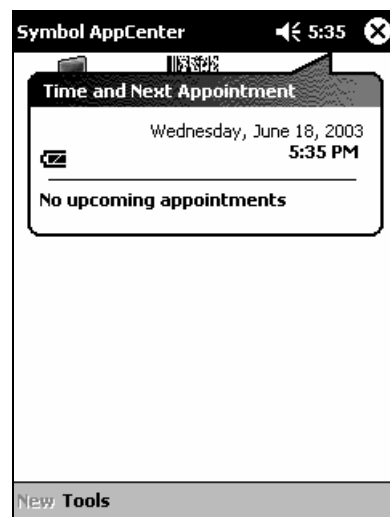
## Leaving SAM

You must switch from the SAM program to the operating system to display these functions, since they are a part of the operating system and not SAM.

To switch to the operating system, tap on the X-icon in the top right corner.

### ***Battery Indicator***

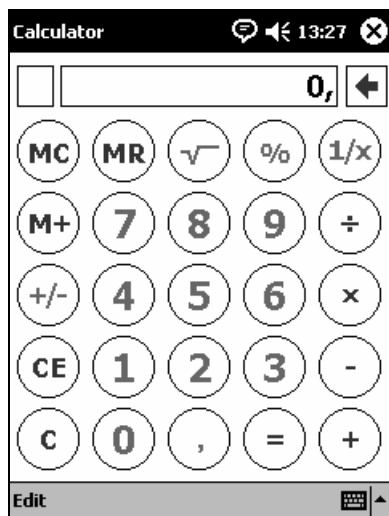
By tapping on the Clock a battery indicator and date and time are displayed:





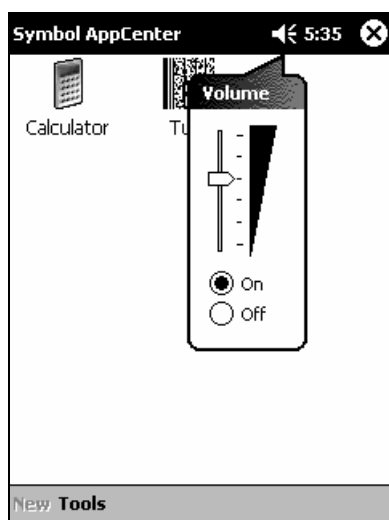
## Calculator

Tapping on the calculator icon starts the calculator:



## Volume Control

By tapping on the loudspeaker a volume control is displayed. Use the slider to set the preferred volume.



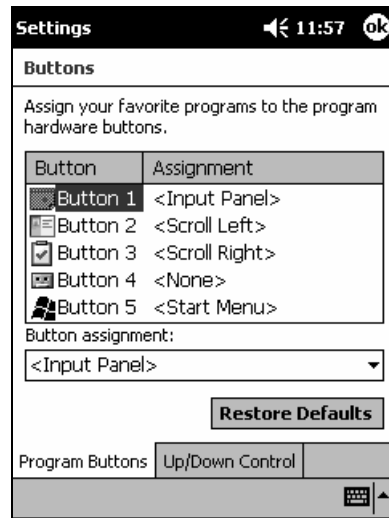
## Buttons

This setting is used to define the application buttons (the physical buttons below the screen).

You reach the setting like this: [Setting](#) | [Personal](#) | [Buttons](#)

Different settings can be selected but we recommend following settings.

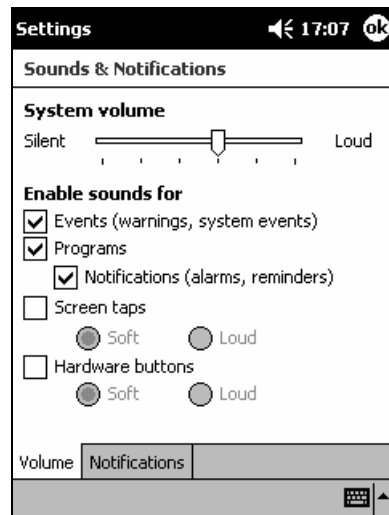
The following setting is required for SAM to work properly; any other setting will cause SAM to switch to the operating system if they are pressed:



## Sounds & Notifications

Setting for the volume and alarm.

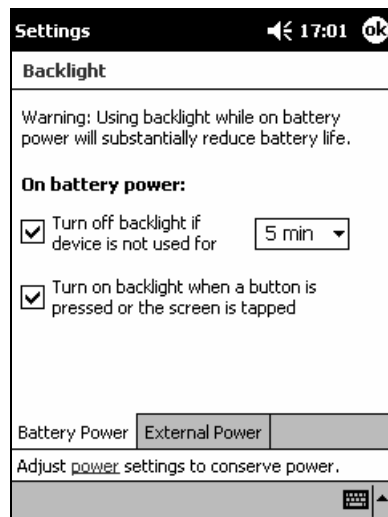
You reach the setting like this: Setting | Personal | Sounds & Notifications



## Backlight

It is recommended that backlight should be switched on when a button is pressed or the screen is tapped.

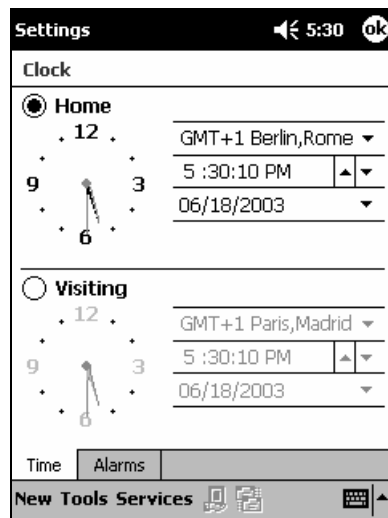
You reach the setting like this: Setting | System | Backlight



## Clock

It is recommended to have the correct date and time on the PPC. Files will receive the date and time when saved, and some dates stored in the database will be based on the time of scanning.

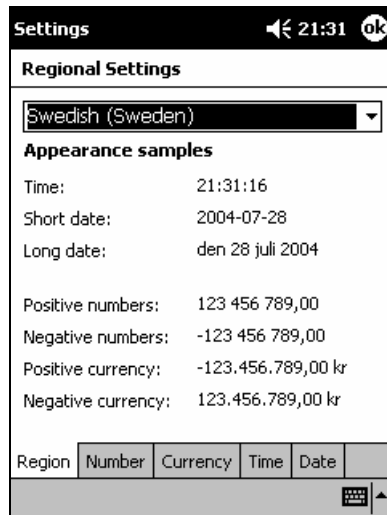
You reach the setting like this: Setting | System | Clock



## Regional settings

Set the date and time format to your national preference.

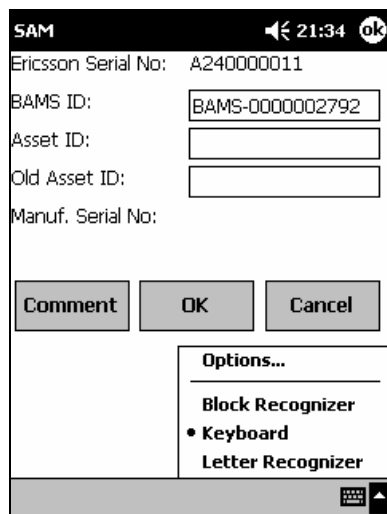
You reach the setting like this: Setting | System | Regional Settings



## Keyboard

Select the keyboard functions by clicking on the arrow in the lower right corner on the screen.

The following menu is displayed:



The Options... option allows you to set the functionality of the keyboard to your preference.

## Enable Keyboard

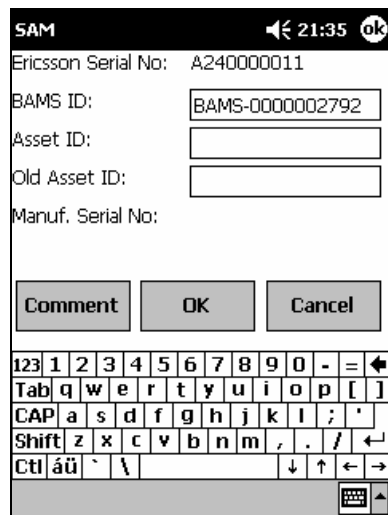
Tap on the keyboard or pen icon at the bottom right corner to enable the manual input mode of the PPC. Several different input modes can be selected.

The keyboard can be used to enter numbers that are not possible to scan.

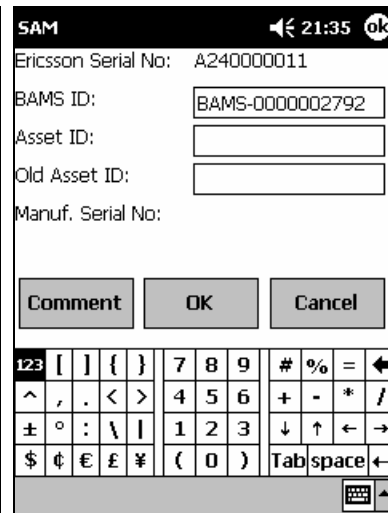
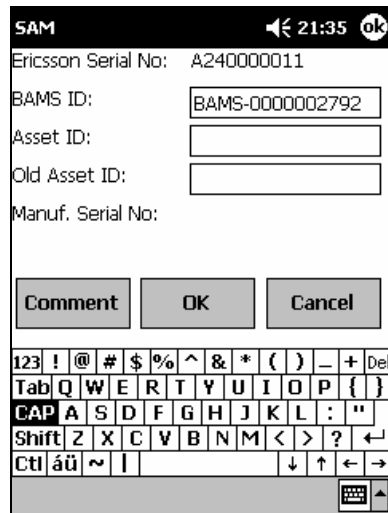
It is not recommended to use the manual input method, due to the high risk of "typing" errors. However, sometimes this is the only option left to enter a certain number into the PPC.

**N.B.** Ericsson serial numbers do not use the characters I and O, since they can easily be mixed up with the numbers 1 and 0.

This picture illustrates the keyboard in normal view:



These pictures illustrate the keyboard in upper case view and numerical view respectively:



# Synchronizing

---

## Partnerships

In order to transfer the file containing the transactions from the PPC to the PC, a partnership has to be set up. This normally has to be done only once. But there are some circumstances that may force you to do it again:

- The PPC is reset (normally due to an upgrade of the software)
- The PPC is used on another PC (that it hasn't been used with before)
- The PC has forgotten the PPC (reformatting or uninstalling of software)

There might be other circumstances, but these are by far the most common.

Each PC can have partnerships with many PPC:s, but the PPC can only hold a maximum of two partnerships in memory.

The following procedure assumes that the ActiveSync software is installed, and that there is no problem with the communication/connection between the PPC and the PC. If this is not true, please refer to the documentation from Microsoft regarding ActiveSync (such as the included Help topics).

## Setting up a Partnership

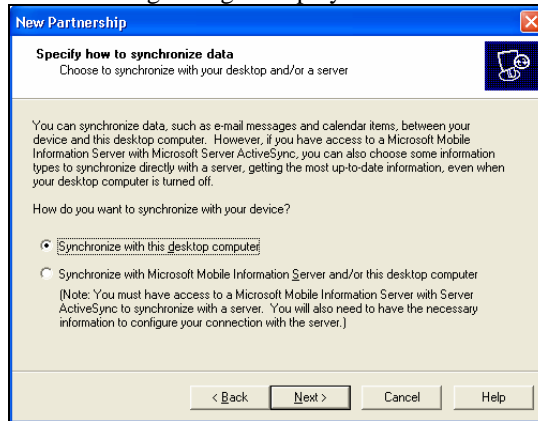
Follow this procedure to set up a partnership:

1. Connect the PPC to the PC using either a cradle or a cable.
2. Wait for the ActiveSync software to recognize the PPC and start up. If it doesn't, use the icon of the software to start it. It is probably in its own group in the Start menu on the PC.
3. The following dialog is displayed:



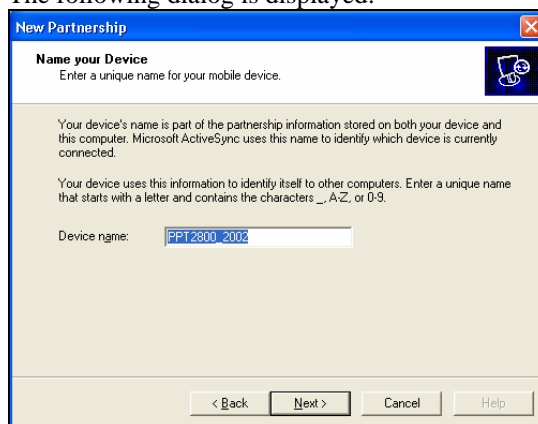
Make sure "Standard partnership" is selected and click on [Next >].

4. The following dialog is displayed:



Make sure "Synchronize with this computer" is selected and click on **[Next >]**.

5. The following dialog is displayed:



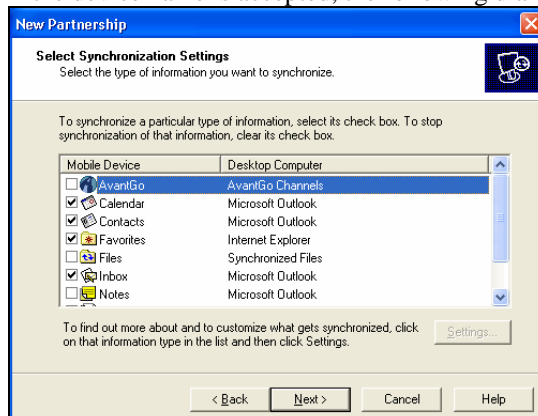
Use the default device name and click on **[Next >]**.

6. If the default name is already in use, the following dialog is displayed:



Click on **[OK]** to return to step 5 and select another device name. The simplest way to get a unique device name is to change the number 2002 at the end. Try 2003, 2004 etc until a device name is accepted.

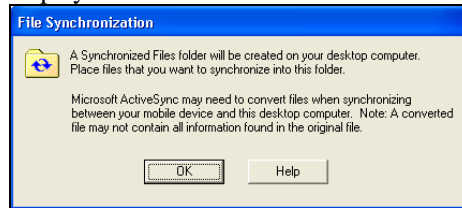
7. If the device name is accepted, the following dialog is displayed:



Here you must *deselect* all options and then *select* **Files**.

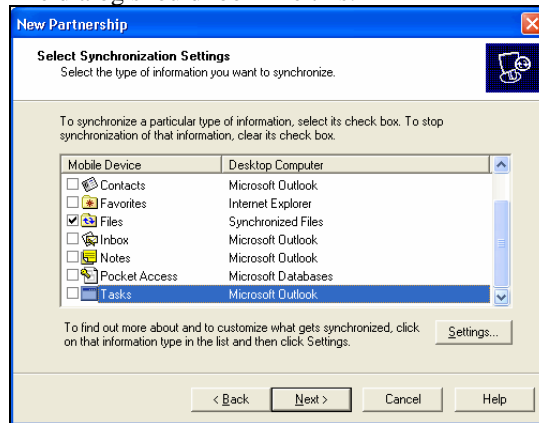
**N.B.** Don't forget to deselect the **Tasks** option at the bottom of the list.

8. When the **Files** option is selected, the following dialog is displayed:



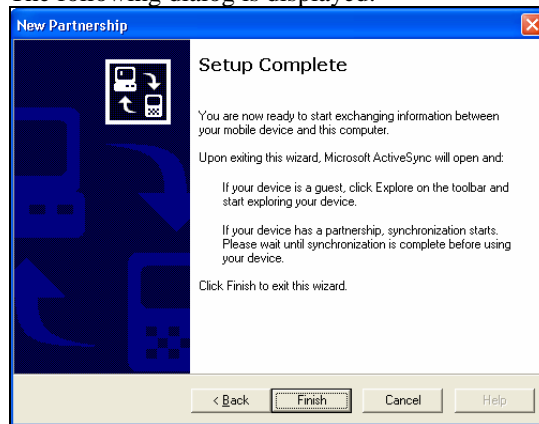
This is just an information, click on **[OK]**.

9. The dialog should look like this:



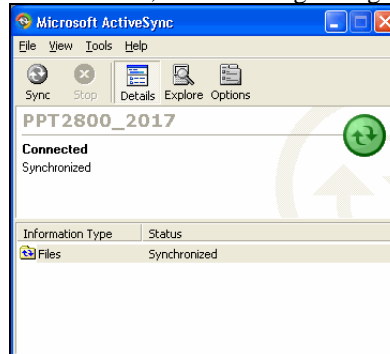
Click on **[Next >]**.

10. The following dialog is displayed:



The partnership is ready to be registered, click on **[Finish]**.

11. After a while, the following dialog is displayed:



The PC synchronizes with the PPC, and the status should be as in the picture above.





# Glossary of Terms

## **ActiveSync**

Software from Microsoft allowing a PocketPC to synchronize with a PC. Any changed files (such as the transaction files created by SAM PPC) are automatically copied to the other part (in this case the PC).

## **Code39**

A 1-dimensional barcode:



## **Code128**

A 1-dimensional barcode:



## **PDF417**

A 2-dimensional barcode:

