

SAM PPC	Datum	2008-11-10	Ref	KS011p03b12env1	Sidnr	1(6)
	Ansvarig	Magnus Ahlén				
	Titel	Configure PocketPC synchronization on Windows Vista				

Configure PocketPC synchronization on Windows Vista.

Windows Mobile devices support Sync Center, but to sync a Windows Mobile device with a computer running Windows Vista, you must use Windows Mobile Device Center software. You are required to download and install Microsoft Windows Mobile Device Center to get your device compatible with Sync Center and to synchronizing files with your device.

Install Windows Mobile Center 6.x.

1. Download “Microsoft Windows Mobile Device Center Driver for Windows Vista (32-bit)” or “Microsoft Windows Mobile Device Center Driver for Windows Vista (64-bit)” from <http://www.microsoft.com/downloads>
2. Find the downloaded file, right click on it and choose “Run as administrator” continue the installation to the end.

Set configuration for Windows Mobile Center 6.x

1. When you insert your pocket pc for the first time in the cradle and the USB-cable is connected to your Vista client, then Microsoft Windows Mobile Device Center starts. (You also find Windows Mobile Device Center in your Control Panel).

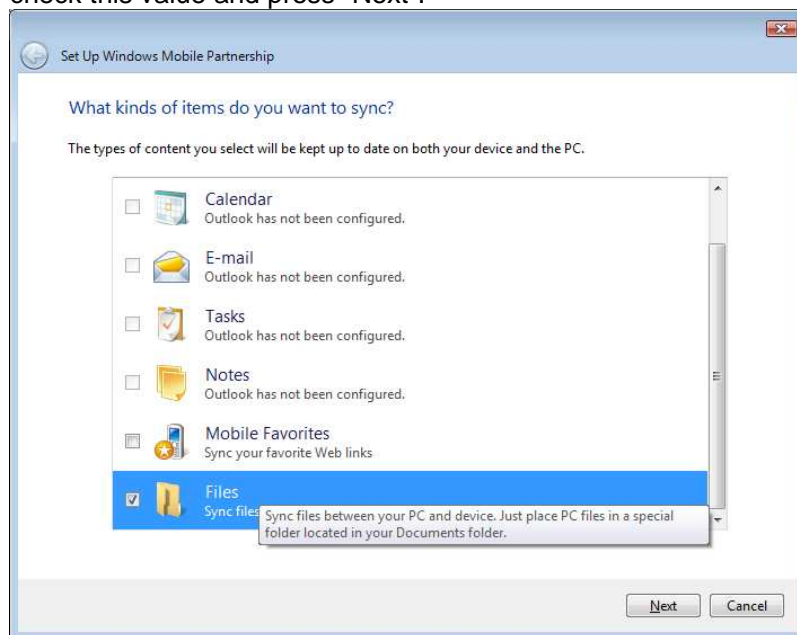
If you use PPT8800 and not Windows Mobile Center starting then we need to install other drivers to pocket pc, see section “Symbol PPT 8800” at the end of this manual.

2. Enter “Set up your device”

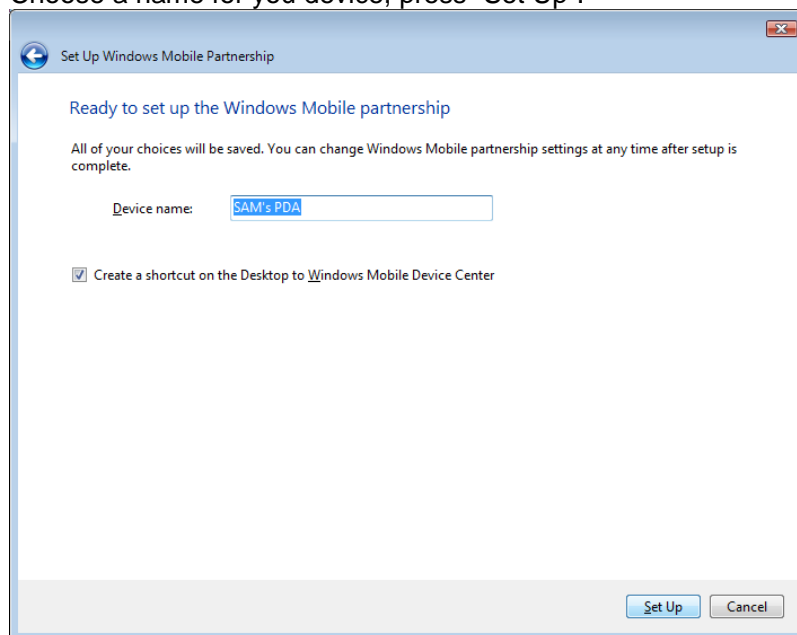


SAM PPC	Datum	2008-11-10	Ref	KS011p03b12env1	Sidnr	2(6)
	Ansvarig	Magnus Ahlén				
	Titel					Configure PocketPC synchronization on Windows Vista

3. Here we need to set what to be synchronized. We want to only synchronize “Files”, check this value and press “Next”.

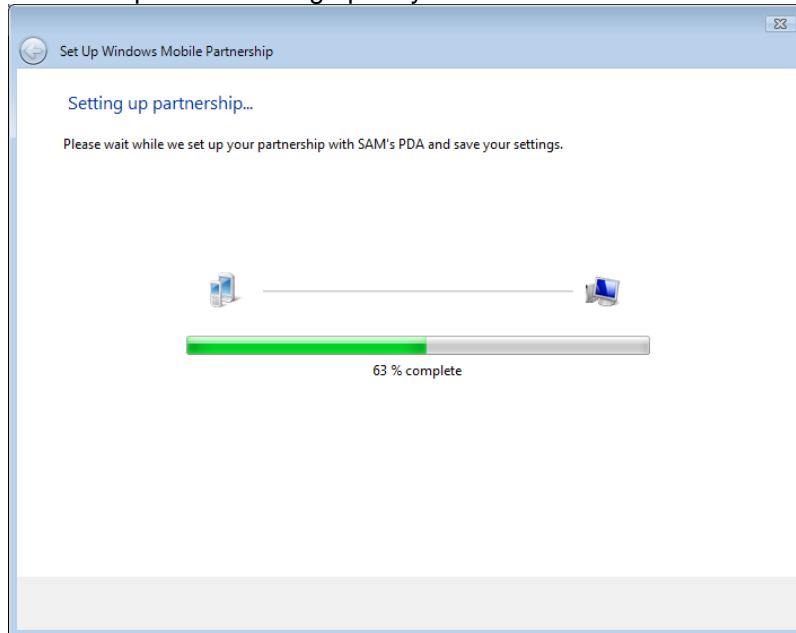


4. Choose a name for you device, press “Set Up”.



SAM PPC	Datum	2008-11-10	Ref	KS011p03b12env1	Sidnr	3(6)
	Ansvarig	Magnus Ahlén				
	Titel					Configure PocketPC synchronization on Windows Vista

5. Partnership is now setting up for your device.



6. The setup is now finished and your device is ready to be used. Now you can synchronize your device from Sync Center.

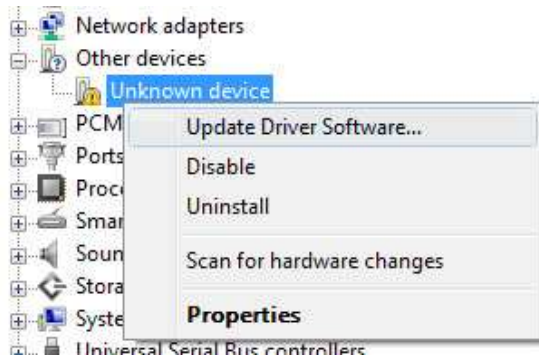


SAM PPC	Datum	2008-11-10	Ref	KS011p03b12env1	Sidnr	4(6)
	Ansvarig	Magnus Ahlén				
	Titel Configure PocketPC synchronization on Windows Vista					

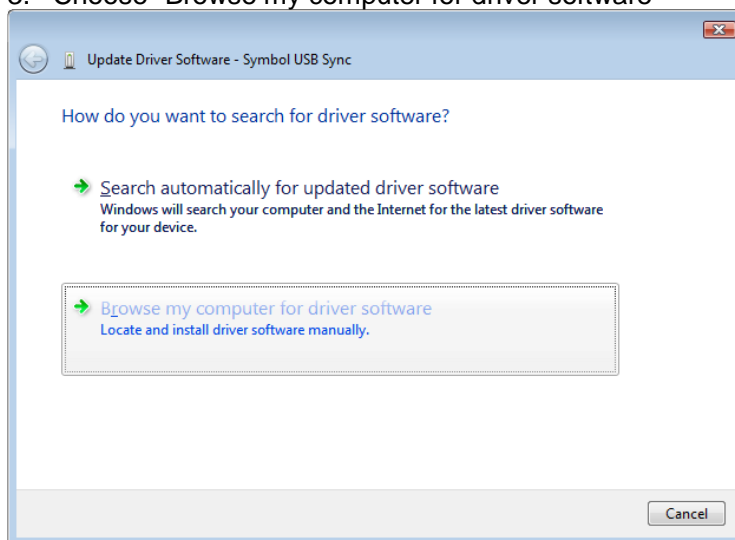
Symbol PPT 8800.

When you insert your pocket pc for the first time in the cradle and the USB-cable is connected to your Vista client, then Microsoft Windows Mobile Device Center starts. If not Windows Mobile starting then we need to install other drivers to pocket pc.

1. Click "Start" button → right click "Computer" choose "Manage" → select "Device Manager" from the list.
2. Find "Other devices" in the list and right click on "Unknown device" choose "Update Driver Software..."

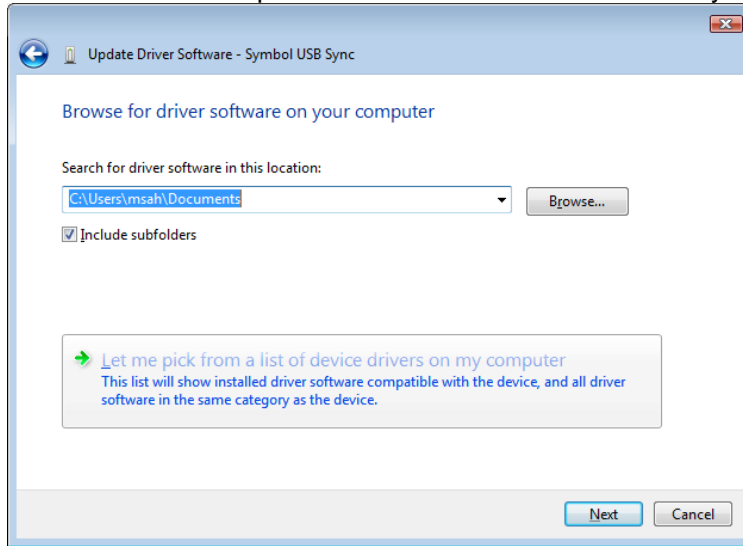


3. Choose "Browse my computer for driver software"

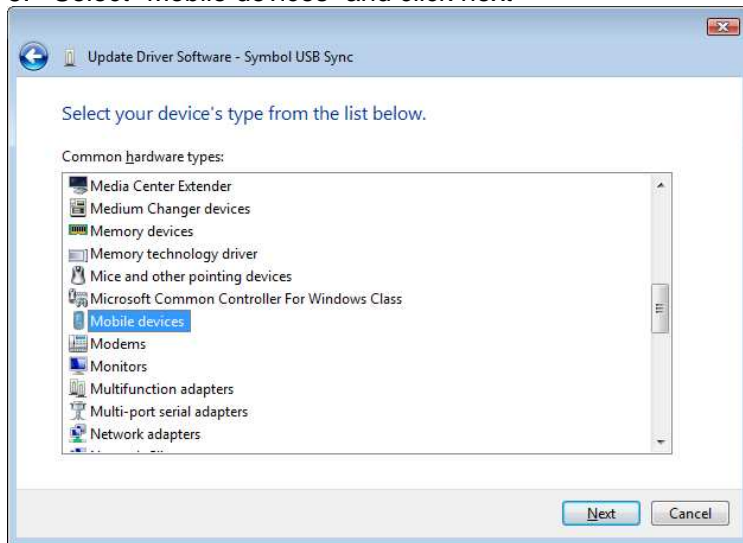


SAM PPC	Datum	2008-11-10	Ref	KS011p03b12env1	Sidnr	5(6)
	Ansvarig	Magnus Ahlén				
	Titel					
	Configure PocketPC synchronization on Windows Vista					

4. Choose "Let me pick from a list of device drivers on my computer"

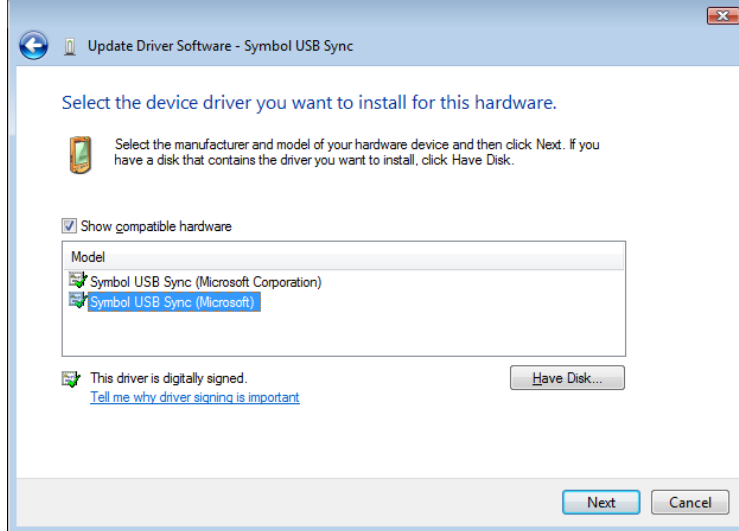


5. Select "Mobile devices" and click next

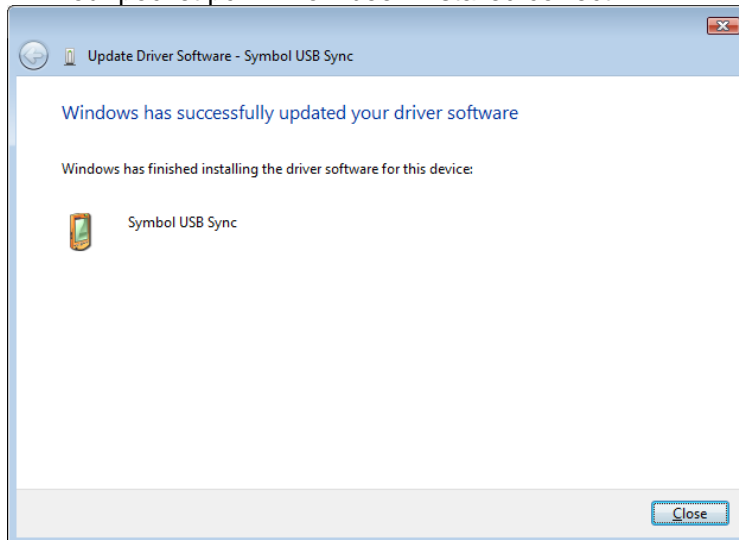


SAM PPC	Datum	2008-11-10	Ref	KS011p03b12env1	Sidnr	6(6)
	Ansvarig	Magnus Ahlén				
	Titel					Configure PocketPC synchronization on Windows Vista

6. Select driver "Symbol USB Sync (Microsoft)" and click next



7. Your pocket pc will now been installed correct.



8. Windows Mobile starts automatic to connect with the pocket pc (Symbol USB Sync).

