

SAM PPC 5.3.2	Date	2009-11-20	Ref	ks011p03b01env5_upgrad	Page	1(9)
	Issued by Magnus Ahlén					
Title		<b>Upgrade Instruction</b>				

# Upgrade instruction for PocketPC

## SAM 5.3.3

### **Abstract**

This upgrade instruction describes how to upgrade version 5.3.x of the PocketPC to 5.3.3.

SAM PPC 5.3.2	Date	2009-11-20	Ref	ks011p03b01env5_upgrad	Page	2(9)
	Issued by	Magnus Ahlén				
Title		<b>Upgrade Instruction</b>				

## 1 SUMMARY

To update a PocketPC, you need to replace 2 files.

This instruction only covers upgrade from version 5.3.x. If you don't have that version installed, you must first upgrade to 5.3.x.

## 2 PREREQUISITES

### 2.1 Needed hardware and software

- Pocket PC with version 5.3.x
- PC
- Microsoft Active Sync software

If the PocketPC is not using version 5.3.x, you must first upgrade to 5.3.x. Please consult the applicable upgrade instructions for upgrading to 5.3.x delivered with the 5.3.x software kit.

**N.B.** To see the version number of the PocketPC, open the **Help | About** menu from within the SAM application on the PocketPC.

### 2.2 Needed files

The file is delivered in the upgrade software kit for 5.3.3:

We support three types of PocketPC's and the files are different.

Select the file that corresponds to your PocketPC.

- **SAM\_PPC\_SYMBOL.ZIP** (Symbol 8800)
- **SAM\_PPC\_SYMBOL\_MC70.ZIP** (Symbol MC70)
- **SAM\_PPC\_INTERMEC.ZIP** (Intermec 740)

Use the ZIP-file with the correct file (**SAM\_PPC.EXE**) for 5.3.3. Extract the file in the ZIP-file to a catalogue of your choice. We recommend putting it in a new folder on the desktop.

**N.B.** The ZIP-file can be found on the Snitcher Asset Management web [www.prevas.se/sam](http://www.prevas.se/sam).

**N.B.** Follow the steps in the appropriate section below.

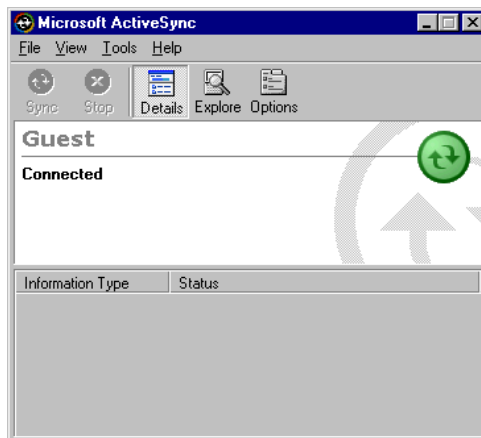
## 3 UPGRADE THE SYMBOL 8800 POCKET PC

The Symbol PocketPC must be connected to the PC. The PocketPC, PC and ActiveSync must be running.

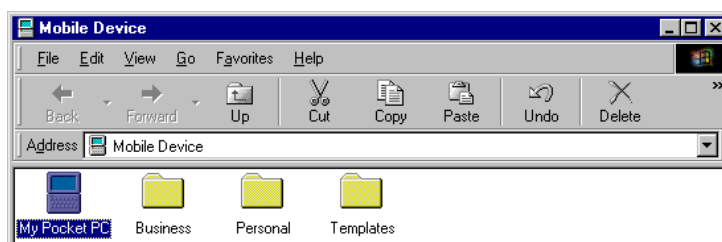
1. Switch to the SAM application on the PocketPC and select the **File | Exit** menu option to quit the SAM application.

SAM PPC 5.3.2	Date	2009-11-20	Ref	ks011p03b01env5_upgrad	Page	3(9)
	Issued by Magnus Ahlén					
Title <b>Upgrade Instruction</b>						

- Put the PocketPC in the cradle or use any other synchronizing device. Then start ActiveSync. The following screen will appear. The status must be "Connected" before you can continue.

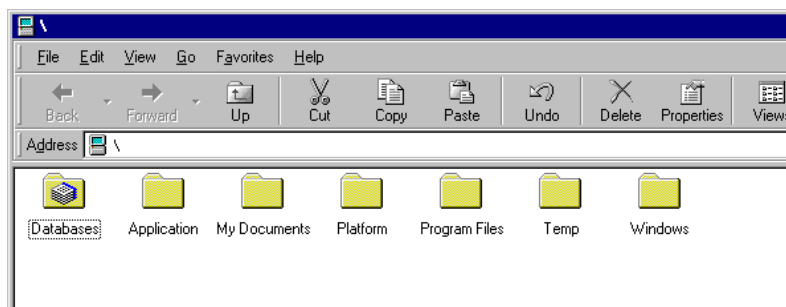


- Select the File | Explore menu option to open the following screen:



Double-Click on My PocketPC.

- The following screen below will be opened:



- On your PC, use the file explorer to open the folder where your source files are located (The file `SAM_PPC.EXE` and `SAM_PPC_INI.XML` that was extracted in section 2.2).

Select the files `SAM_PPC.EXE` and `SAM_PPC_INI.XML` and copy.

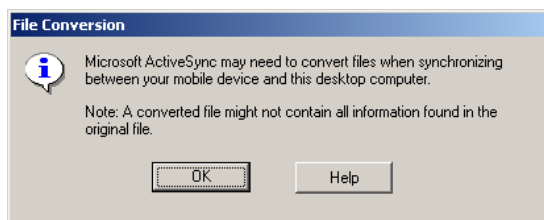
Go to the file explorer (from step 4) for the Pocket PC and select the folder "Application". Paste the copied files there. If previous versions of the files exists, a dialog will be displayed showing this, just confirm to paste the new files and replace

SAM PPC 5.3.2	Date	2009-11-20	Ref	ks011p03b01env5_upgrad	Page	4(9)
	Issued by Magnus Ahlén					
Title <b>Upgrade Instruction</b>						

the old file.

**N.B.** If you copy the file from media such as a CD, the file might be read only. In this case, you must remove the read-only attribute.

6. The following screen may appear, and you must confirm by clicking on **[OK]**.



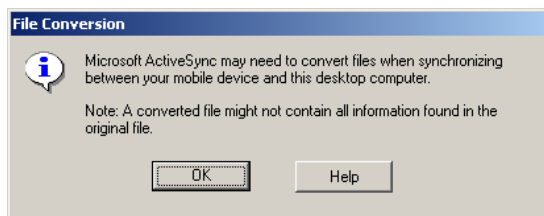
7. The file is now replaced in the folder.
8. On your PC, use the file explorer to open the folder where your source files are located (The files `SAM_PPC.EXE` and `SAM_PPC_INI.XML` that was extracted in section 2.2).

Select the `SAM_PPC.EXE` file and copy it.

Go to the file explorer (from step 4) for the Pocket PC and select the folder "Windows". Paste the copied file there. If a previous version of the file exists, a dialog will be displayed showing this, just confirm to paste the new file and replace the old file.

**N.B.** If you copy the file from media such as a CD, the file might be read only. In this case, you must remove the read-only attribute.

9. The following screen may appear, and you must confirm by clicking on **[OK]**.



10. The file is now replaced in the Windows folder.

The upgrade is now finished. No cold or hot reboot is needed. You can close all windows you have opened and disconnect the PPC.

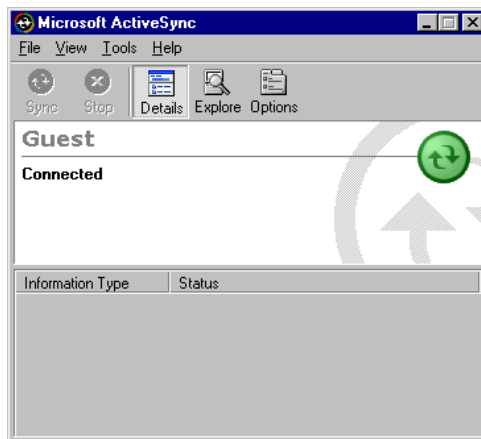
Start SAM and verify that the **Help | About** dialog displays the version number 5.3.1.

SAM PPC 5.3.2	Date	2009-11-20	Ref	ks011p03b01env5_upgrad	Page	5(9)
	Issued by Magnus Ahlén					
Title		<b>Upgrade Instruction</b>				

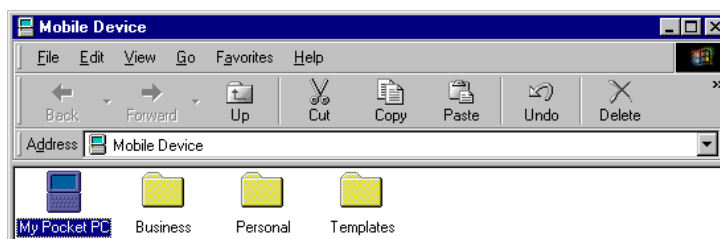
#### 4 UPGRADE THE SYMBOL MC70 POCKET PC

The Symbol PocketPC must be connected to the PC. The PocketPC, PC and ActiveSync must be running.

1. Switch to the SAM application on the PocketPC and select the **File | Exit** menu option to quit the SAM application.
2. Put the PocketPC in the cradle or use any other synchronizing device. Then start ActiveSync. The following screen will appear. The status must be "Connected" before you can continue.

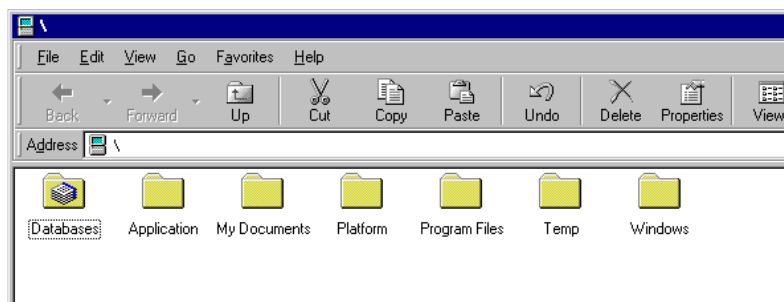


3. Select the File | Explore menu option to open the following screen:



Double-Click on My PocketPC.

4. The following screen below will be opened:



5. On your PC, use the file explorer to open the folder where your source files are located (The files `SAM_PPC.EXE` and `SAM_PPC_INI.XML` that was extracted in section

SAM PPC 5.3.2	Date	2009-11-20	Ref	ks011p03b01env5_upgrad	Page	6(9)
	Issued by Magnus Ahlén					
Title <b>Upgrade Instruction</b>						

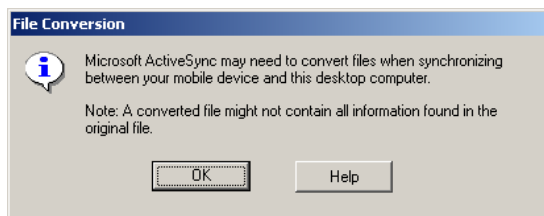
2.2).

Select the file `SAM_PPC_INI.XML` and copy.

Go to the file explorer (from step 4) for the Pocket PC and select the folder "Application". Paste the copied file there. If a previous version of the file exists, a dialog will be displayed showing this, just confirm to paste the new file and replace the old file.

**N.B.** If you copy the file from media such as a CD, the file might be read only. In this case, you must remove the read-only attribute.

6. The following screen may appear, and you must confirm by clicking on **[OK]**.



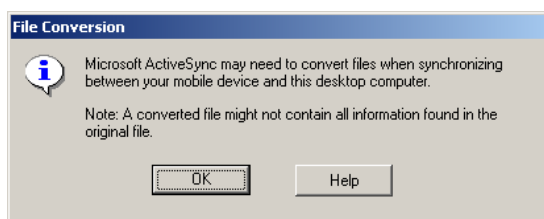
7. The file is now replaced in the folder.
8. On your PC, use the file explorer to open the folder where your source files are located (The files `SAM_PPC.EXE` and `SAM_PPC_INI.XML` that was extracted in section 2.2).

Select the `SAM_PPC.EXE` file and copy it.

Go to the file explorer (from step 4) for the Pocket PC and select the folder "Program Files\Snitcher\_PPC". Paste the copied file there. If a previous version of the file exists, a dialog will be displayed showing this, just confirm to paste the new file and replace the old file.

**N.B.** If you copy the file from media such as a CD, the file might be read only. In this case, you must remove the read-only attribute.

9. The following screen may appear, and you must confirm by clicking on **[OK]**.



11. The file is now replaced in the Windows folder.

SAM PPC 5.3.2	Date	2009-11-20	Ref	ks011p03b01env5_upgrad	Page	7(9)
	Issued by Magnus Ahlén					
Title		<b>Upgrade Instruction</b>				

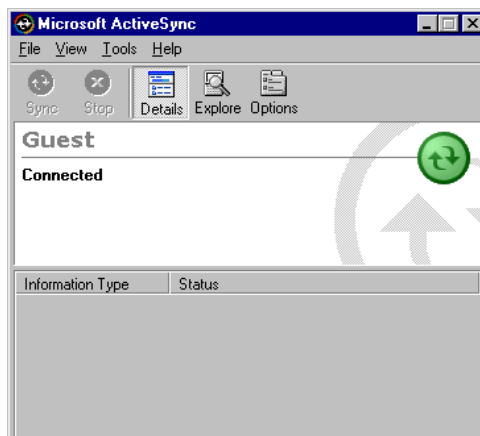
The upgrade is now finished. No cold or hot reboot is needed. You can close all windows you have opened and disconnect the PPC.

Start SAM and verify that the **Help | About** dialog displays the version number 5.3.3.

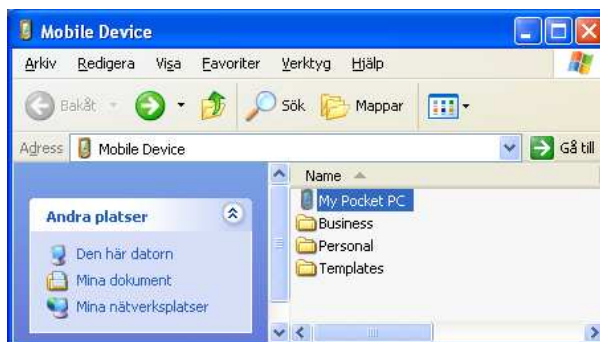
## 5 UPGRADE THE INTERMEC POCKET PC

The PocketPC must be connected to the PC. The PocketPC, PC and ActiveSync must be running.

1. Switch to the SAM application on the PocketPC and select the **File | Exit** menu option to quit the SAM application.
2. Put the PocketPC in the cradle or use any other synchronizing device. Then start ActiveSync. The following screen will appear. The status must be "Connected" before you can continue.



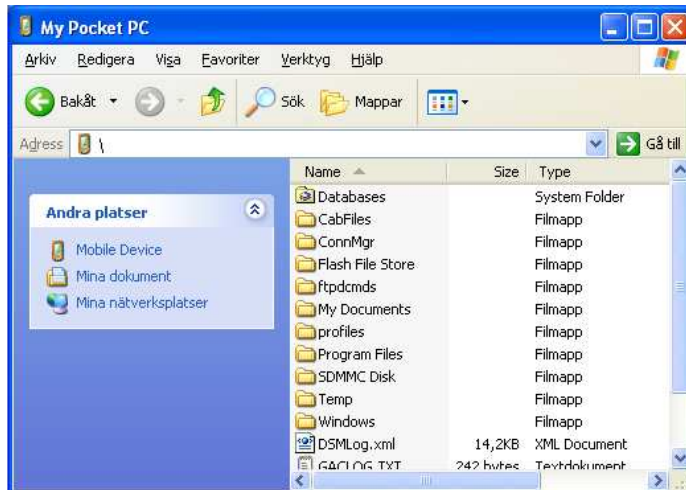
3. Select the File | Explore menu option to open the following screen:



Double-Click on My PocketPC.

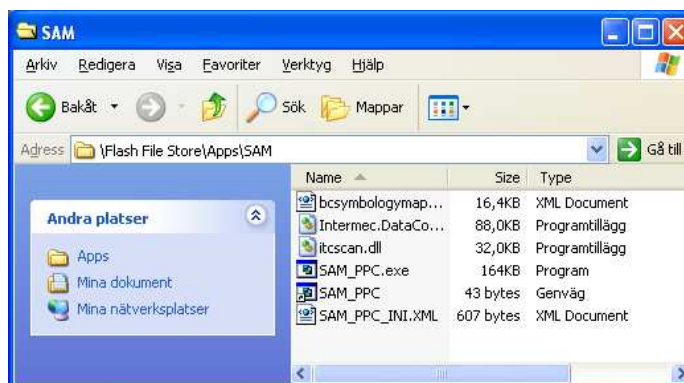
4. The following screen will be opened:

SAM PPC 5.3.2	Date	2009-11-20	Ref	ks011p03b01env5_upgrad	Page	8(9)
	Issued by Magnus Ahlén					
Title <b>Upgrade Instruction</b>						



Double-Click on Flash File Store, Apps and then SAM.

5. The following screen below will be opened:



6. On your PC, use the file explorer to open the folder where your source files are located (The file **SAM\_PPC.EXE** and **SAM\_PPC\_INI.XML** that was extracted in section 2.2).

Select the files **SAM\_PPC.EXE** and **SAM\_PPC\_INI.XML** and copy.

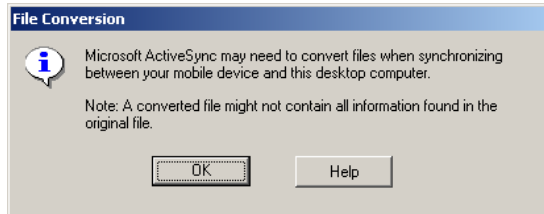
Go to the file explorer (from step 5) for the Pocket PC and paste the copied files there. If a previous versions of the files exists, a dialog will be displayed showing this, just confirm to paste the new files and replace the old files.

**N.B.** If you copy the file from media such as a CD, the file might be read only. In this case, you must remove the read-only attribute.



SAM PPC 5.3.2	Date	2009-11-20	Ref	ks011p03b01env5_upgrad	Page	9(9)
	Issued by Magnus Ahlén					
Title <b>Upgrade Instruction</b>						

7. The following screen may appear, and you must confirm by clicking on **[OK]**.



8. The file is now replaced in the SAM folder.

The upgrade is now finished. No cold or hot reboot is needed. You can close all windows you have opened and disconnect the PPC.

Start SAM and verify that the **Help | About** dialog displays the version number 5.3.3.